

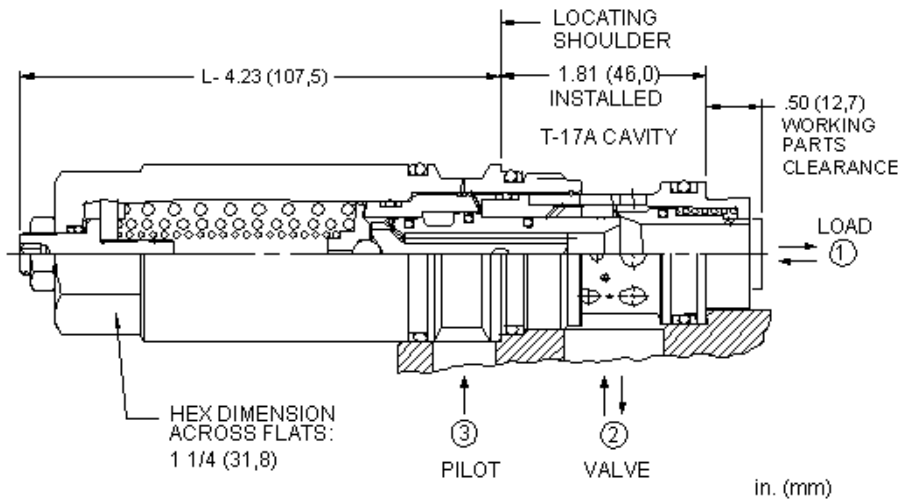
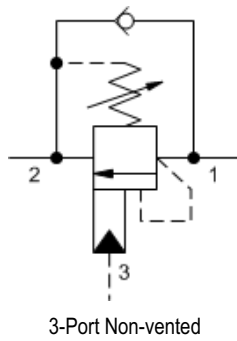
Load Holding, Load Control Cartridges

*Powered by Sun **QuickPrint**,
your on-demand, customized catalogue solution.*

This information is subject to change without notice. Visit www.sunhydraulics.com for complete and up to date information.

MBGB	1.5:1 pilot ratio, load reactive, load control valve1
MBIB	1.5:1 pilot ratio, load reactive, load control valve2
MBEA	3:1 pilot ratio, load reactive, load control valve3
MBGA	3:1 pilot ratio, load reactive, load control valve4
MBIA	3:1 pilot ratio, load reactive, load control valve5
MBEG	4.5:1 pilot ratio, load reactive, load control valve6
MBGG	4.5:1 pilot ratio, load reactive, load control valve7
MBIG	4.5:1 pilot ratio, load reactive, load control valve8
MBIAX	Fixed setting, 3:1 pilot ratio, load reactive, load control valve9
MBEGX	Fixed setting, 4.5:1 pilot ratio, load reactive, load control valve10
MBGGX	Fixed setting, 4.5:1 pilot ratio, load reactive, load control valve11
MBIGX	Fixed setting, 4.5:1 pilot ratio, load reactive, load control valve12
MWEB	Vented, 1.5:1 pilot ratio, load reactive, load control valve13
MWEA	Vented, 3:1 pilot ratio, load reactive, load control valve14
MWEG	Vented, 4.5:1 pilot ratio, load reactive, load control valve15
MWGG	Vented, 4.5:1 pilot ratio, load reactive, load control valve16
MWIG	Vented, 4.5:1 pilot ratio, load reactive, load control valve17
MWGAX	Fixed setting, vented, 3:1 pilot ratio, load reactive, load control valve18
MWEGX	Fixed setting, vented, 4.5:1 pilot ratio, load reactive, load control valve19
MWGGX	Fixed setting, vented, 4.5:1 pilot ratio, load reactive, load control valve20
MBDA	3:1 pilot ratio, load reactive load control valve21

Series	Ports	Cavities
Series Z Cartridges 3/8-24 UNF Cartridge Thread 5 mm Valve Hex Size 11 - 14 Nm Valve Installation Torque	3-Port	T-382A
Series P Cartridges M16 Cartridge Thread 22,2 mm Valve Hex Size 27 - 33 Nm Valve Installation Torque	2-Port 2-Port (Deep) 3-Port	T-8A T-8DP T-9A
Series 0 Cartridges M16 Cartridge Thread 19,1 mm Valve Hex Size 25,4 mm Valve Hex Size 27 - 33 Nm Valve Installation Torque	2-Port 2-Port (Deep) 3-Port 3-Port 4-Port	T-162A T-162DP T-150A T-163A T-30A
Series 1 Cartridges M20 Cartridge Thread 22,2 mm Valve Hex Size 41 - 47 Nm Valve Installation Torque	2-Port 2-Port 3-Port 4-Port 4-Port 6-Port	T-10A T-13A T-11A T-21A T-31A T-61A
Series 2 Cartridges 1"-14 UNS Cartridge Thread 28,6 mm Valve Hex Size 61 - 68 Nm Valve Installation Torque	2-Port 2-Port 3-Port 4-Port 4-Port 4-Port (Dual path) 6-Port 6-Port	T-3A T-5A T-2A T-22A T-32A T-52AD T-52A T-62A
Series 3 Cartridges M36 Cartridge Thread 31,8 mm Valve Hex Size 203 - 217 Nm Valve Installation Torque	2-Port 3-Port 4-Port 4-Port 4-Port (Dual path) 6-Port 6-Port	T-16A T-17A T-23A T-33A T-53AD T-53A T-63A
Series 4 Cartridges M48 Cartridge Thread 41,3 mm Valve Hex Size 474 - 508 Nm Valve Installation Torque	2-Port 2-Port (Undercut) 3-Port 3-Port (Undercut) 4-Port 4-Port (Undercut) 4-Port 4-Port (Dual path) 6-Port 6-Port	T-18A T-18AU T-19A T-19AU T-24A T-24AU T-34A T-54AD T-54A T-64A



Load reactive, load control valves with pilot assist combine two valves; a check valve and a relief valve. The check valve allows free flow from the directional valve (port 2) to the load (port 1) while a direct-acting, pilot-assisted relief valve controls flow from port 1 to port 2. Pilot assist at port 3 lowers the effective setting of the relief valve at a rate determined by the pilot ratio.

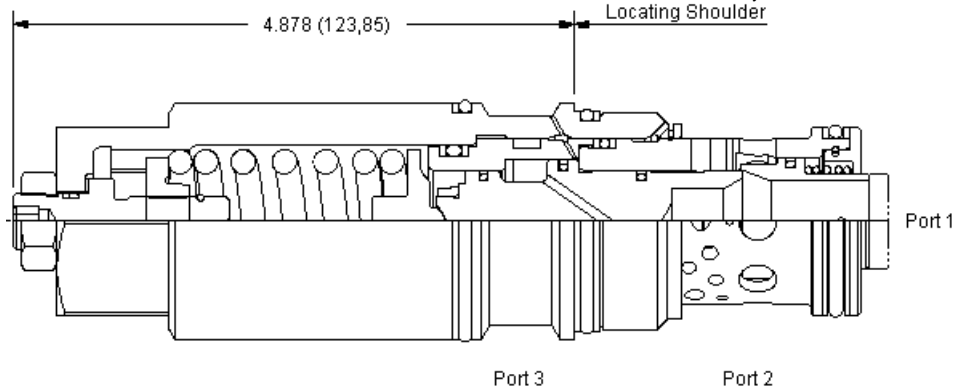
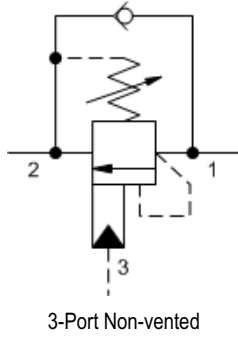
TECHNICAL DATA

NOTE: DATA MAY VARY BY CONFIGURATION. SEE CONFIGURATION SECTION.

Pilot Ratio	1.5:1
Maximum Recommended Load Pressure	See Technical Features
Factory Pressure Settings Established at	30 cc/min.
Maximum Operating Pressure	350 bar
Maximum Valve Leakage at Reseat	0,3 cc/min.
Check Cracking Pressure	1,7 bar
Adjustment - No. of CCW Turns from Min. to Max. Setting	9
Reseat	≥77% of setting
Locknut Hex Size	15 mm
Locknut Torque	9 - 10 Nm
Seal kit - Cartridge	Buna: 990017007
Seal kit - Cartridge	Polyurethane: 990017002
Seal kit - Cartridge	Viton: 990017006

CONFIGURATION OPTIONS
Model Code Example: MBGBLHN

CONTROL	(L) FUNCTIONAL SETTING RANGE (H)	SEAL MATERIAL	(N) MATERIAL/COATING
L Standard Screw Adjustment	H 1000 - 4000 psi (70 - 280 bar), 3000 psi (210 bar) Standard Setting J 2000 - 5000 psi (140 - 350 bar), 3000 psi (210 bar) Standard Setting	N Buna-N V Viton	Standard Material/Coating /AP Stainless Steel, Passivated



Load reactive, load control valves with pilot assist combine two valves; a check valve and a relief valve. The check valve allows free flow from the directional valve (port 2) to the load (port 1) while a direct-acting, pilot-assisted relief valve controls flow from port 1 to port 2. Pilot assist at port 3 lowers the effective setting of the relief valve at a rate determined by the pilot ratio.

TECHNICAL DATA

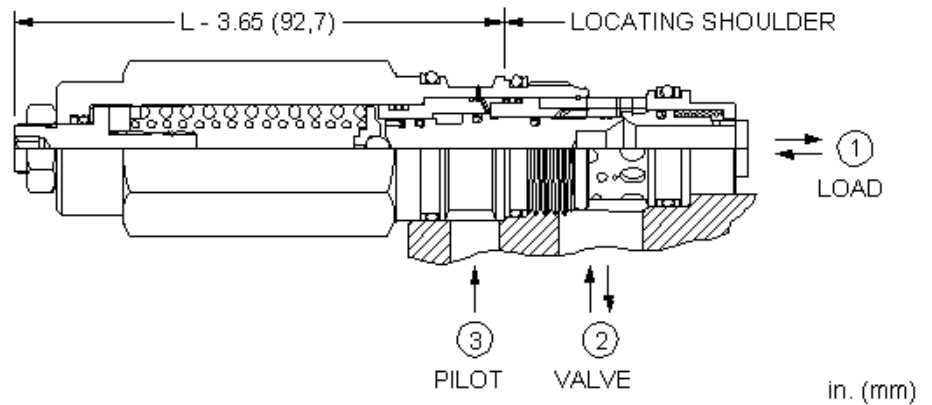
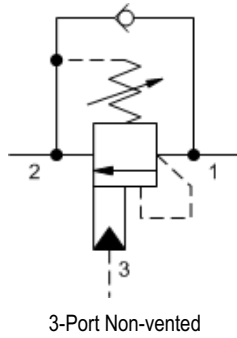
NOTE: DATA MAY VARY BY CONFIGURATION. SEE CONFIGURATION SECTION.

Pilot Ratio	1.5:1
Maximum Recommended Load Pressure	See Technical Features
Factory Pressure Settings Established at	30 cc/min.
Maximum Operating Pressure	350 bar
Maximum Valve Leakage at Reseat	0,3 cc/min.
Check Cracking Pressure	1,7 bar
Adjustment - No. of CCW Turns from Min. to Max. Setting	7
Reseat	≥77% of setting
Locknut Hex Size	19,1 mm
Locknut Torque	9 - 10 Nm
Seal kit - Cartridge	Buna: 990019007
Seal kit - Cartridge	Polyurethane: 990019002
Seal kit - Cartridge	Viton: 990019006

CONFIGURATION OPTIONS

Model Code Example: MBIBLHN

CONTROL	(L) FUNCTIONAL SETTING RANGE (H)	SEAL MATERIAL	(N) MATERIAL/COATING
L Standard Screw Adjustment	H 1000 - 4000 psi (70 - 280 bar), 3000 psi (210 bar) Standard Setting J 2000 - 5000 psi (140 - 350 bar), 3000 psi (210 bar) Standard Setting	N Buna-N V Viton	Standard Material/Coating /AP Stainless Steel, Passivated



Load reactive, load control valves with pilot assist combine two valves; a check valve and a relief valve. The check valve allows free flow from the directional valve (port 2) to the load (port 1) while a direct-acting, pilot-assisted relief valve controls flow from port 1 to port 2. Pilot assist at port 3 lowers the effective setting of the relief valve at a rate determined by the pilot ratio.

TECHNICAL DATA

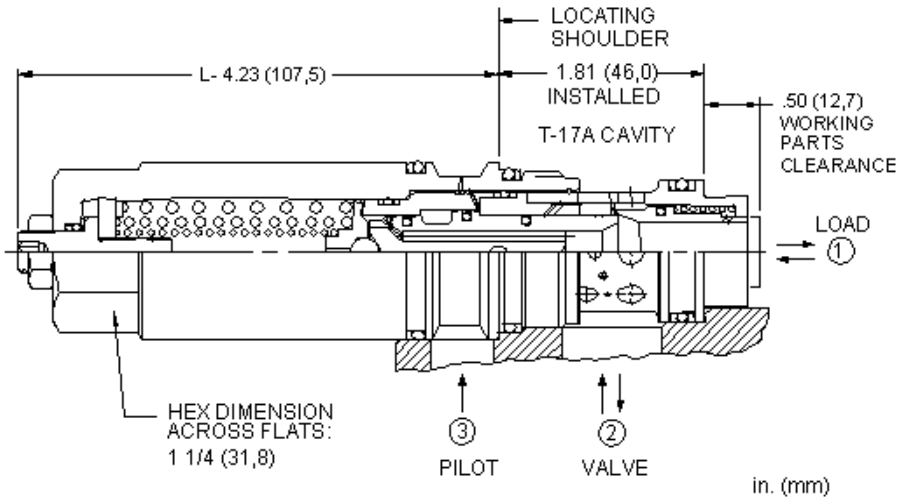
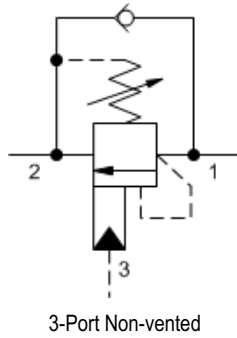
NOTE: DATA MAY VARY BY CONFIGURATION. SEE CONFIGURATION SECTION.

Pilot Ratio	3:1
Maximum Recommended Load Pressure	See Technical Features
Factory Pressure Settings Established at	30 cc/min.
Maximum Operating Pressure	350 bar
Maximum Valve Leakage at Reseat	0,3 cc/min.
Check Cracking Pressure	1,7 bar
Adjustment - No. of CCW Turns from Min. to Max. Setting	9
Reseat	≥77% of setting
Locknut Hex Size	15 mm
Locknut Torque	9 - 10 Nm
Seal kit - Cartridge	Buna: 990202007
Seal kit - Cartridge	Polyurethane: 990002002
Seal kit - Cartridge	Viton: 990202006

CONFIGURATION OPTIONS

Model Code Example: MBEALHN

CONTROL	(L) FUNCTIONAL SETTING RANGE	(H) SEAL MATERIAL	(N) MATERIAL/COATING
L Standard Screw Adjustment	H 1000 - 4000 psi (70 - 280 bar), 3000 psi (210 bar) Standard Setting	N Buna-N	Standard Material/Coating
C Tamper Resistant - Factory Set	J 2000 - 5000 psi (140 - 350 bar), 3000 psi (210 bar) Standard Setting	V Viton	/AP Stainless Steel, Passivated /LH Mild Steel, Zinc-Nickel



Load reactive, load control valves with pilot assist combine two valves; a check valve and a relief valve. The check valve allows free flow from the directional valve (port 2) to the load (port 1) while a direct-acting, pilot-assisted relief valve controls flow from port 1 to port 2. Pilot assist at port 3 lowers the effective setting of the relief valve at a rate determined by the pilot ratio.

TECHNICAL DATA

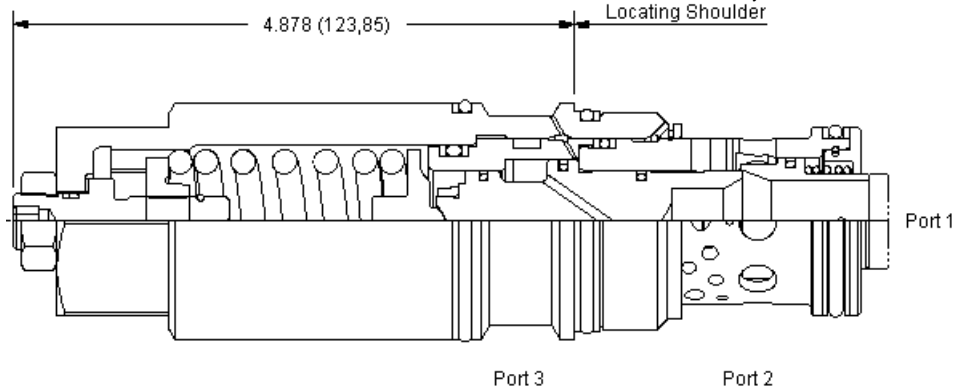
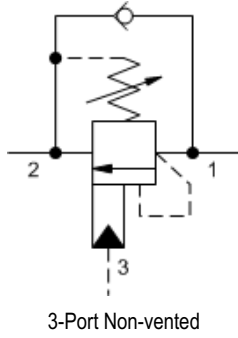
NOTE: DATA MAY VARY BY CONFIGURATION. SEE CONFIGURATION SECTION.

Pilot Ratio	3:1
Maximum Recommended Load Pressure	See Technical Features
Factory Pressure Settings Established at	30 cc/min.
Maximum Operating Pressure	350 bar
Maximum Valve Leakage at Reseat	0,3 cc/min.
Check Cracking Pressure	1,7 bar
Adjustment - No. of CCW Turns from Min. to Max. Setting	9
Reseat	≥77% of setting
Locknut Hex Size	15 mm
Locknut Torque	9 - 10 Nm
Seal kit - Cartridge	Buna: 990017007
Seal kit - Cartridge	EPDM: 990017014
Seal kit - Cartridge	Polyurethane: 990017002
Seal kit - Cartridge	Viton: 990017006

CONFIGURATION OPTIONS

Model Code Example: **MBGALHN**

CONTROL	(L) FUNCTIONAL SETTING RANGE (H)	SEAL MATERIAL	(N) MATERIAL/COATING
L Standard Screw Adjustment	H 1000 - 4000 psi (70 - 280 bar), 3000 psi (210 bar) Standard Setting J 2000 - 5000 psi (140 - 350 bar), 3000 psi (210 bar) Standard Setting	N Buna-N E EPDM V Viton	Standard Material/Coating /AP Stainless Steel, Passivated /LH Mild Steel, Zinc-Nickel



Load reactive, load control valves with pilot assist combine two valves; a check valve and a relief valve. The check valve allows free flow from the directional valve (port 2) to the load (port 1) while a direct-acting, pilot-assisted relief valve controls flow from port 1 to port 2. Pilot assist at port 3 lowers the effective setting of the relief valve at a rate determined by the pilot ratio.

TECHNICAL DATA

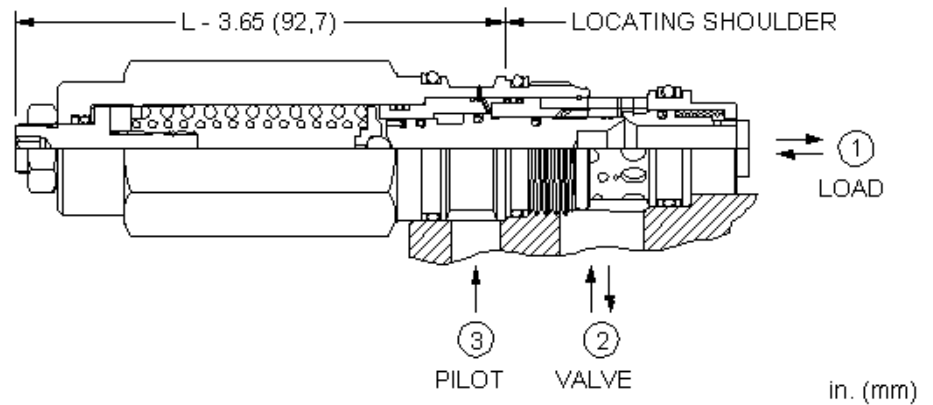
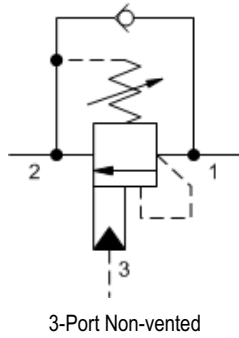
NOTE: DATA MAY VARY BY CONFIGURATION. SEE CONFIGURATION SECTION.

Pilot Ratio	3:1
Maximum Recommended Load Pressure	See Technical Features
Factory Pressure Settings Established at	30 cc/min.
Maximum Operating Pressure	350 bar
Maximum Valve Leakage at Reseat	0,3 cc/min.
Check Cracking Pressure	1,7 bar
Adjustment - No. of CCW Turns from Min. to Max. Setting	7
Reseat	≥77% of setting
Locknut Hex Size	19,1 mm
Locknut Torque	35 - 40 Nm
Seal kit - Cartridge	Buna: 990019007
Seal kit - Cartridge	Polyurethane: 990019002
Seal kit - Cartridge	Viton: 990019006

CONFIGURATION OPTIONS

Model Code Example: MBIALHN

CONTROL	(L) FUNCTIONAL SETTING RANGE (H)	SEAL MATERIAL	(N) MATERIAL/COATING
L Standard Screw Adjustment	H 1000 - 4000 psi (70 - 280 bar), 3000 psi (210 bar) Standard Setting J 2000 - 5000 psi (140 - 350 bar), 3000 psi (210 bar) Standard Setting	N Buna-N V Viton	Standard Material/Coating /AP Stainless Steel, Passivated



Load reactive, load control valves with pilot assist combine two valves; a check valve and a relief valve. The check valve allows free flow from the directional valve (port 2) to the load (port 1) while a direct-acting, pilot-assisted relief valve controls flow from port 1 to port 2. Pilot assist at port 3 lowers the effective setting of the relief valve at a rate determined by the pilot ratio.

TECHNICAL DATA

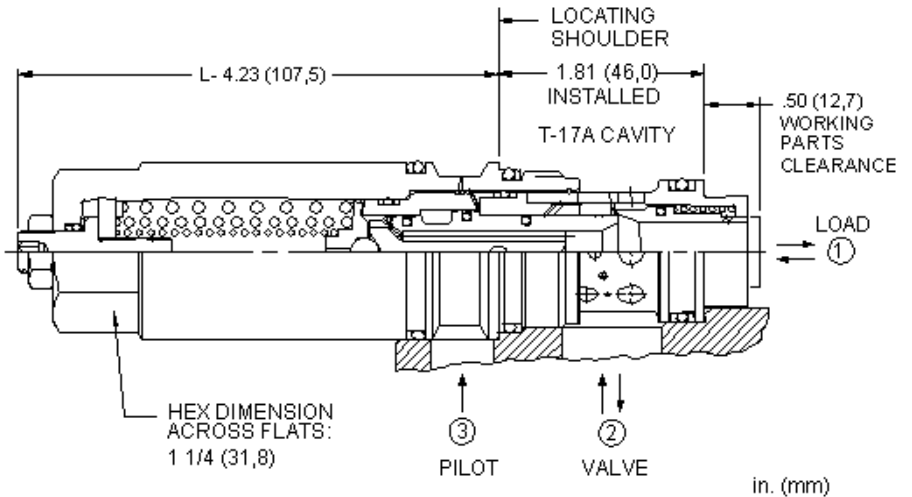
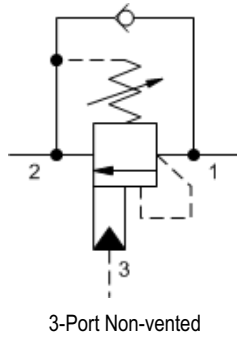
NOTE: DATA MAY VARY BY CONFIGURATION. SEE CONFIGURATION SECTION.

Pilot Ratio	4.5:1
Maximum Recommended Load Pressure	See Technical Features
Factory Pressure Settings Established at	30 cc/min.
Maximum Operating Pressure	350 bar
Maximum Valve Leakage at Reseat	0,3 cc/min.
Check Cracking Pressure	1,7 bar
Adjustment - No. of CCW Turns from Min. to Max. Setting	9
Reseat	≥77% of setting
Locknut Hex Size	15 mm
Locknut Torque	9 - 10 Nm
Seal kit - Cartridge	Buna: 990202007
Seal kit - Cartridge	Polyurethane: 990002002
Seal kit - Cartridge	Viton: 990202006

CONFIGURATION OPTIONS

Model Code Example: **MBEGLHN**

CONTROL	(L) FUNCTIONAL SETTING RANGE	(H) SEAL MATERIAL	(N) MATERIAL/COATING
L Standard Screw Adjustment	H 1000 - 4000 psi (70 - 280 bar), 3000 psi (210 bar) Standard Setting	N Buna-N	Standard Material/Coating
C Tamper Resistant - Factory Set	J 2000 - 5000 psi (140 - 350 bar), 3000 psi (210 bar) Standard Setting	V Viton	/AP Stainless Steel, Passivated /LH Mild Steel, Zinc-Nickel



Load reactive, load control valves with pilot assist combine two valves; a check valve and a relief valve. The check valve allows free flow from the directional valve (port 2) to the load (port 1) while a direct-acting, pilot-assisted relief valve controls flow from port 1 to port 2. Pilot assist at port 3 lowers the effective setting of the relief valve at a rate determined by the pilot ratio.

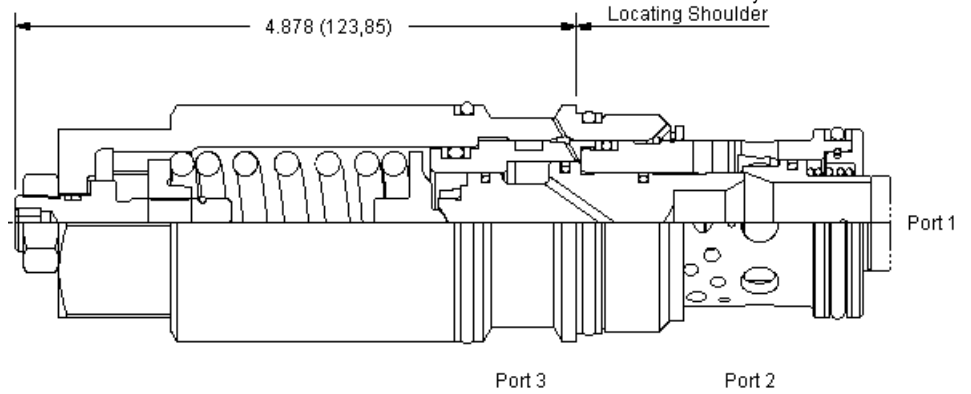
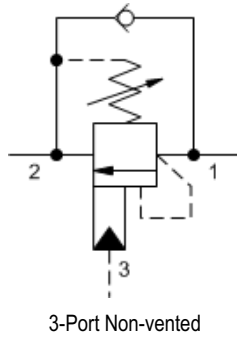
TECHNICAL DATA

NOTE: DATA MAY VARY BY CONFIGURATION. SEE CONFIGURATION SECTION.

Pilot Ratio	4.5:1
Maximum Recommended Load Pressure	See Technical Features
Factory Pressure Settings Established at	30 cc/min.
Maximum Operating Pressure	350 bar
Maximum Valve Leakage at Reseat	0,3 cc/min.
Check Cracking Pressure	1,7 bar
Adjustment - No. of CCW Turns from Min. to Max. Setting	9
Reseat	≥77% of setting
Locknut Hex Size	15 mm
Locknut Torque	9 - 10 Nm
Seal kit - Cartridge	Buna: 990017007
Seal kit - Cartridge	Polyurethane: 990017002
Seal kit - Cartridge	Viton: 990017006

CONFIGURATION OPTIONS
Model Code Example: MBGGLJN

CONTROL	(L) FUNCTIONAL SETTING RANGE	(J) SEAL MATERIAL	(N) MATERIAL/COATING
L Standard Screw Adjustment	J 2000 - 5000 psi (140 - 350 bar), 3000 psi (210 bar) Standard Setting H 1000 - 4000 psi (70 - 280 bar), 3000 psi (210 bar) Standard Setting	N Buna-N V Viton	Standard Material/Coating /AP Stainless Steel, Passivated /LH Mild Steel, Zinc-Nickel



Load reactive, load control valves with pilot assist combine two valves; a check valve and a relief valve. The check valve allows free flow from the directional valve (port 2) to the load (port 1) while a direct-acting, pilot-assisted relief valve controls flow from port 1 to port 2. Pilot assist at port 3 lowers the effective setting of the relief valve at a rate determined by the pilot ratio.

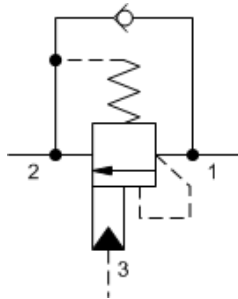
TECHNICAL DATA

NOTE: DATA MAY VARY BY CONFIGURATION. SEE CONFIGURATION SECTION.

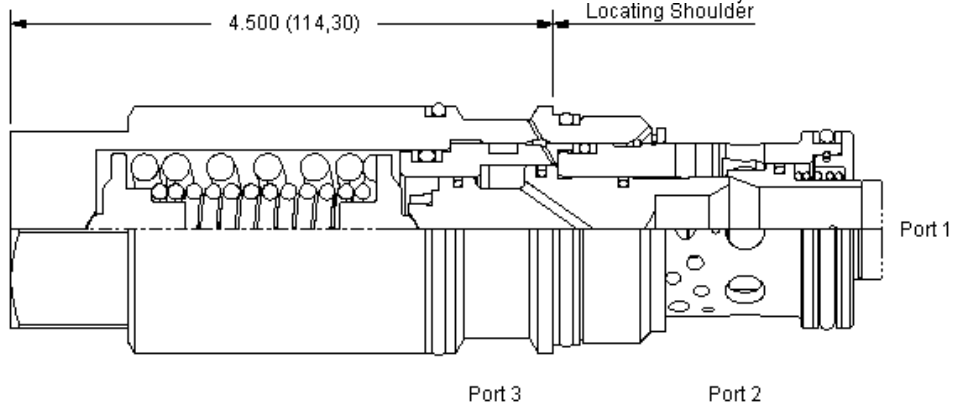
Pilot Ratio	4.5:1
Maximum Recommended Load Pressure	See Technical Features
Factory Pressure Settings Established at	30 cc/min.
Maximum Operating Pressure	350 bar
Maximum Valve Leakage at Reseat	0,3 cc/min.
Check Cracking Pressure	1,7 bar
Adjustment - No. of CCW Turns from Min. to Max. Setting	7
Reseat	≥77% of setting
Locknut Hex Size	19,1 mm
Locknut Torque	35 - 40 Nm
Seal kit - Cartridge	Buna: 990019007
Seal kit - Cartridge	Polyurethane: 990019002
Seal kit - Cartridge	Viton: 990019006

CONFIGURATION OPTIONS
Model Code Example: MBIGLHN

CONTROL	(L) FUNCTIONAL SETTING RANGE (H)	SEAL MATERIAL	(N) MATERIAL/COATING
L Standard Screw Adjustment	H 1000 - 4000 psi (70 - 280 bar), 3000 psi (210 bar) Standard Setting J 2000 - 5000 psi (140 - 350 bar), 3000 psi (210 bar) Standard Setting	N Buna-N V Viton	Standard Material/Coating /LH Mild Steel, Zinc-Nickel



3-Port Non-vented, Fixed Setting



Fixed setting, load reactive, load control valves with pilot assist combine two valves; a check valve and a relief valve. The check valve allows free flow from the directional valve (port 2) to the load (port 1) while a direct-acting, pilot-assisted relief valve controls flow from port 1 to port 2. Pilot assist at port 3 lowers the effective setting of the relief valve at a rate determined by the pilot ratio.

TECHNICAL DATA

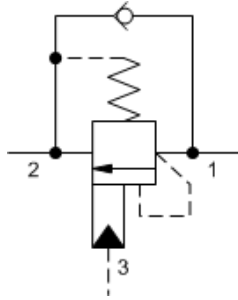
NOTE: DATA MAY VARY BY CONFIGURATION. SEE CONFIGURATION SECTION.

Pilot Ratio	3:1
Maximum Recommended Load Pressure	See Technical Features
Factory Pressure Settings Established at	30 cc/min.
Maximum Operating Pressure	350 bar
Maximum Valve Leakage at Reseat	0,3 cc/min.
Check Cracking Pressure	1,7 bar
Reseat	≥77% of setting
Seal kit - Cartridge	Buna: 990019007
Seal kit - Cartridge	Polyurethane: 990019002
Seal kit - Cartridge	Viton: 990019006

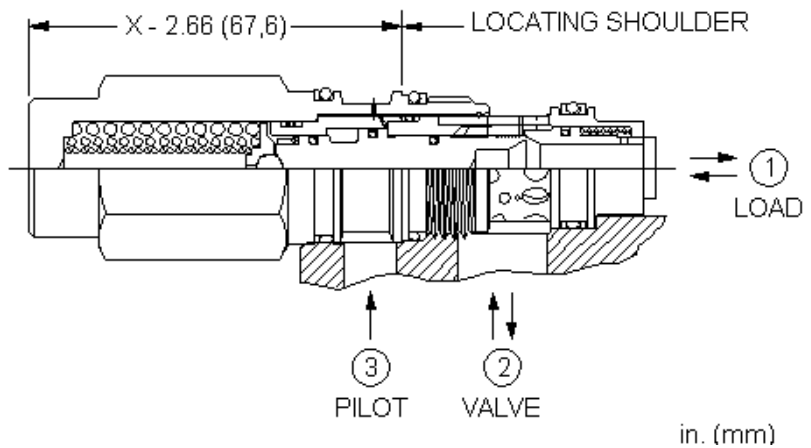
CONFIGURATION OPTIONS

Model Code Example: MBIAXLN

FACTORY SET	(L)	SEAL MATERIAL	(N)
L 4000 psi (280 bar)		N Buna-N	
K 3000 psi (210 bar)		V Viton	
M 5000 psi (350 bar)			



3-Port Non-vented, Fixed Setting



Fixed setting, load reactive, load control valves with pilot assist combine two valves; a check valve and a relief valve. The check valve allows free flow from the directional valve (port 2) to the load (port 1) while a direct-acting, pilot-assisted relief valve controls flow from port 1 to port 2. Pilot assist at port 3 lowers the effective setting of the relief valve at a rate determined by the pilot ratio.

TECHNICAL DATA

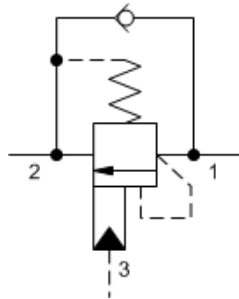
NOTE: DATA MAY VARY BY CONFIGURATION. SEE CONFIGURATION SECTION.

Pilot Ratio	4.5:1
Maximum Recommended Load Pressure	See Technical Features
Factory Pressure Settings Established at	30 cc/min.
Maximum Operating Pressure	350 bar
Maximum Valve Leakage at Reseat	0,3 cc/min.
Check Cracking Pressure	1,7 bar
Reseat	≥77% of setting
Seal kit - Cartridge	Buna: 990202007
Seal kit - Cartridge	Polyurethane: 990002002
Seal kit - Cartridge	Viton: 990202006

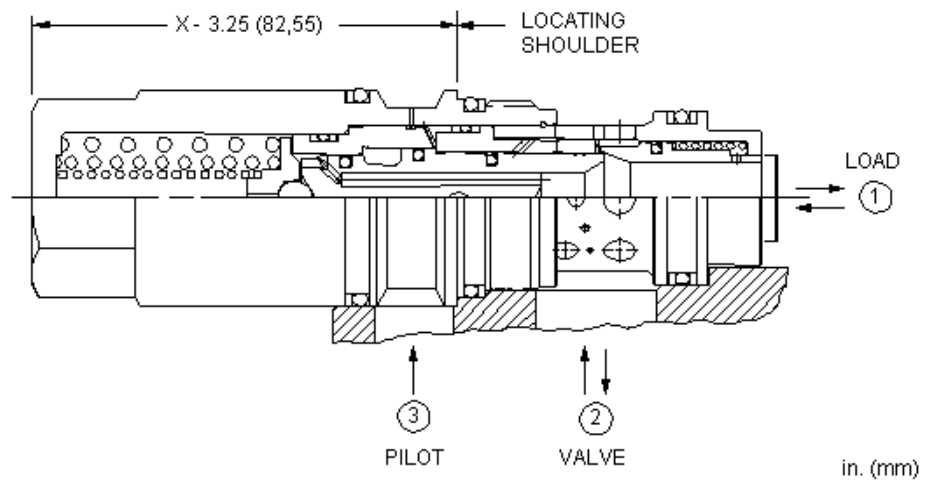
CONFIGURATION OPTIONS

Model Code Example: MBEGXLN

FACTORY SET	(L)	SEAL MATERIAL	(N)
L 4000 psi (280 bar)		N Buna-N	
K 3000 psi (210 bar)		V Viton	
M 5000 psi (350 bar)			



3-Port Non-vented, Fixed Setting



Fixed setting, load reactive, load control valves with pilot assist combine two valves; a check valve and a relief valve. The check valve allows free flow from the directional valve (port 2) to the load (port 1) while a direct-acting, pilot-assisted relief valve controls flow from port 1 to port 2. Pilot assist at port 3 lowers the effective setting of the relief valve at a rate determined by the pilot ratio.

TECHNICAL DATA

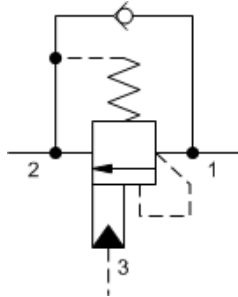
NOTE: DATA MAY VARY BY CONFIGURATION. SEE CONFIGURATION SECTION.

Pilot Ratio	4.5:1
Maximum Recommended Load Pressure	See Technical Features
Factory Pressure Settings Established at	30 cc/min.
Maximum Operating Pressure	350 bar
Maximum Valve Leakage at Reseat	0,3 cc/min.
Check Cracking Pressure	1,7 bar
Reseat	≥77% of setting
Seal kit - Cartridge	Buna: 990017007
Seal kit - Cartridge	Polyurethane: 990017002
Seal kit - Cartridge	Viton: 990017006

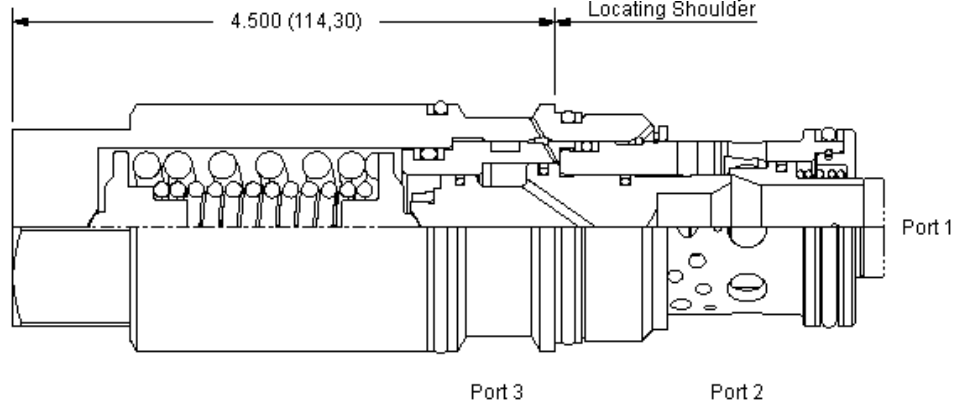
CONFIGURATION OPTIONS

Model Code Example: MBGGXLN

FACTORY SET	(L) SEAL MATERIAL	(N) MATERIAL/COATING
L 4000 psi (280 bar)	N Buna-N	Standard Material/Coating
K 3000 psi (210 bar)	V Viton	/AP Stainless Steel, Passivated
M 5000 psi (350 bar)		/LH Mild Steel, Zinc-Nickel



3-Port Non-vented, Fixed Setting



Fixed setting, load reactive, load control valves with pilot assist combine two valves; a check valve and a relief valve. The check valve allows free flow from the directional valve (port 2) to the load (port 1) while a direct-acting, pilot-assisted relief valve controls flow from port 1 to port 2. Pilot assist at port 3 lowers the effective setting of the relief valve at a rate determined by the pilot ratio.

TECHNICAL DATA

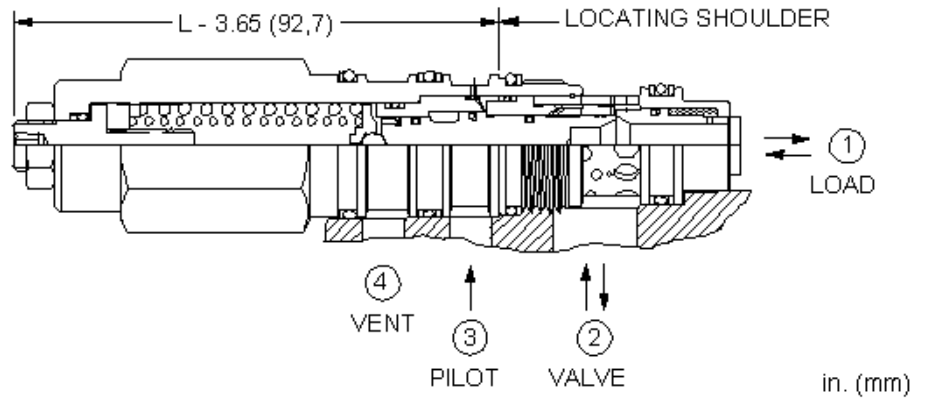
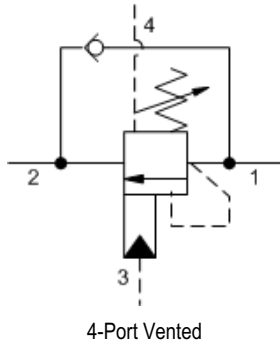
NOTE: DATA MAY VARY BY CONFIGURATION. SEE CONFIGURATION SECTION.

Pilot Ratio	4.5:1
Maximum Recommended Load Pressure	See Technical Features
Factory Pressure Settings Established at	30 cc/min.
Maximum Operating Pressure	350 bar
Maximum Valve Leakage at Reseat	0,3 cc/min.
Check Cracking Pressure	1,7 bar
Reseat	≥77% of setting
Seal kit - Cartridge	Buna: 990019007
Seal kit - Cartridge	Polyurethane: 990019002
Seal kit - Cartridge	Viton: 990019006

CONFIGURATION OPTIONS

Model Code Example: MBIGXMN

FACTORY SET	(M) SEAL MATERIAL	(N) MATERIAL/COATING
M 5000 psi (350 bar)	N Buna-N	Standard Material/Coating
K 3000 psi (210 bar)	V Viton	/AP Stainless Steel, Passivated
L 4000 psi (280 bar)		/LH Mild Steel, Zinc-Nickel



Vented, load reactive load control valves with pilot assist combine two valves; a check valve and a relief valve. The check valve allows free flow from the directional valve (port 2) to the load (port 1) while a direct-acting, pilot-assisted relief valve controls flow from port 1 to port 2. Pilot assist at port 3 lowers the effective setting of the relief valve at a rate determined by the pilot ratio. Backpressure at port 2 does not affect the valve setting because the spring chamber references the vent (port 4).

TECHNICAL DATA

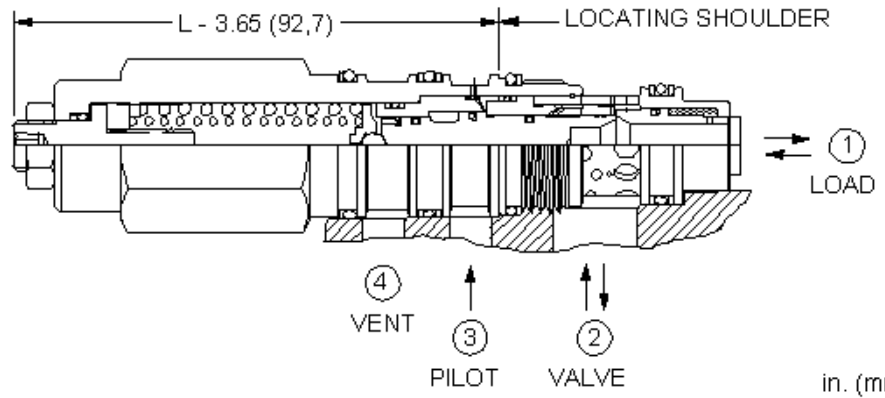
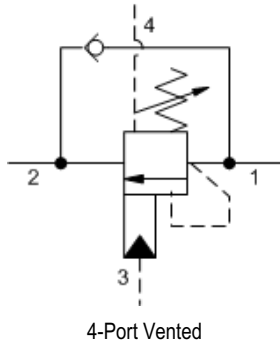
NOTE: DATA MAY VARY BY CONFIGURATION. SEE CONFIGURATION SECTION.

Pilot Ratio	1.5:1
Maximum Recommended Load Pressure	See Technical Features
Factory Pressure Settings Established at	30 cc/min.
Maximum Operating Pressure	350 bar
Maximum Valve Leakage at Reseat	0,3 cc/min.
Check Cracking Pressure	1,7 bar
Adjustment - No. of CCW Turns from Min. to Max. Setting	9
Reseat	≥77% of setting
Locknut Hex Size	15 mm
Locknut Torque	9 - 10 Nm
Seal kit - Cartridge	Buna: 990022007
Seal kit - Cartridge	Polyurethane: 990022002
Seal kit - Cartridge	Viton: 990022006

CONFIGURATION OPTIONS

Model Code Example: MWEBLHN

CONTROL	(L) FUNCTIONAL SETTING RANGE (H)	SEAL MATERIAL	(N) MATERIAL/COATING
L Standard Screw Adjustment	H 1000 - 4000 psi (70 - 280 bar), 3000 psi (210 bar) Standard Setting J 2000 - 5000 psi (140 - 350 bar), 3000 psi (210 bar) Standard Setting	N Buna-N V Viton	Standard Material/Coating /AP Stainless Steel, Passivated



Vented, load reactive load control valves with pilot assist combine two valves; a check valve and a relief valve. The check valve allows free flow from the directional valve (port 2) to the load (port 1) while a direct-acting, pilot-assisted relief valve controls flow from port 1 to port 2. Pilot assist at port 3 lowers the effective setting of the relief valve at a rate determined by the pilot ratio. Backpressure at port 2 does not affect the valve setting because the spring chamber references the vent (port 4).

TECHNICAL DATA

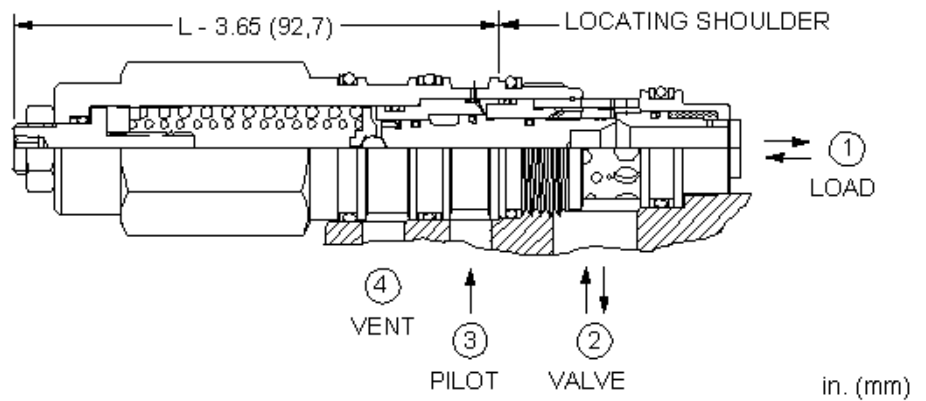
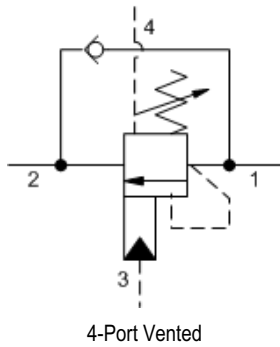
NOTE: DATA MAY VARY BY CONFIGURATION. SEE CONFIGURATION SECTION.

Pilot Ratio	3:1
Maximum Recommended Load Pressure	See Technical Features
Factory Pressure Settings Established at	30 cc/min.
Maximum Operating Pressure	350 bar
Maximum Valve Leakage at Reseat	0,3 cc/min.
Check Cracking Pressure	1,7 bar
Adjustment - No. of CCW Turns from Min. to Max. Setting	9
Reseat	≥77% of setting
Locknut Hex Size	15 mm
Locknut Torque	9 - 10 Nm
Seal kit - Cartridge	Buna: 990022007
Seal kit - Cartridge	Polyurethane: 990022002
Seal kit - Cartridge	Viton: 990022006

CONFIGURATION OPTIONS

Model Code Example: MWEALHN

CONTROL	(L) FUNCTIONAL SETTING RANGE (H)	SEAL MATERIAL	(N) MATERIAL/COATING
L Standard Screw Adjustment	H 1000 - 4000 psi (70 - 280 bar), 3000 psi (210 bar) Standard Setting	N Buna-N	Standard Material/Coating
C Tamper Resistant - Factory Set	J 2000 - 5000 psi (140 - 350 bar), 3000 psi (210 bar) Standard Setting	V Viton	/AP Stainless Steel, Passivated /LH Mild Steel, Zinc-Nickel



Vented, load reactive load control valves with pilot assist combine two valves; a check valve and a relief valve. The check valve allows free flow from the directional valve (port 2) to the load (port 1) while a direct-acting, pilot-assisted relief valve controls flow from port 1 to port 2. Pilot assist at port 3 lowers the effective setting of the relief valve at a rate determined by the pilot ratio. Backpressure at port 2 does not affect the valve setting because the spring chamber references the vent (port 4).

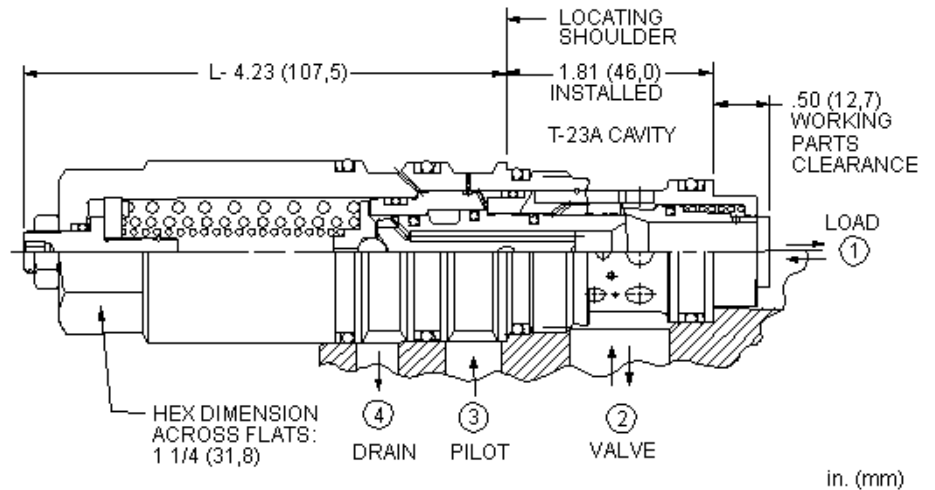
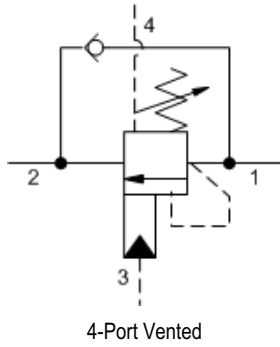
TECHNICAL DATA

NOTE: DATA MAY VARY BY CONFIGURATION. SEE CONFIGURATION SECTION.

Pilot Ratio	4.5:1
Maximum Recommended Load Pressure	See Technical Features
Factory Pressure Settings Established at	30 cc/min.
Maximum Operating Pressure	350 bar
Maximum Valve Leakage at Reseat	0,3 cc/min.
Check Cracking Pressure	1,7 bar
Adjustment - No. of CCW Turns from Min. to Max. Setting	8.5
Reseat	≥77% of setting
Locknut Hex Size	15 mm
Locknut Torque	9 - 10 Nm
Seal kit - Cartridge	Buna: 990022007
Seal kit - Cartridge	Polyurethane: 990022002
Seal kit - Cartridge	Viton: 990022006

CONFIGURATION OPTIONS
Model Code Example: MWEGLHN

CONTROL	(L) FUNCTIONAL SETTING RANGE (H)	SEAL MATERIAL	(N) MATERIAL/COATING
L Standard Screw Adjustment	H 1000 - 4000 psi (70 - 280 bar), 3000 psi (210 bar) Standard Setting J 2000 - 5000 psi (140 - 350 bar), 3000 psi (210 bar) Standard Setting	N Buna-N V Viton	Standard Material/Coating /AP Stainless Steel, Passivated



Vented, load reactive load control valves with pilot assist combine two valves; a check valve and a relief valve. The check valve allows free flow from the directional valve (port 2) to the load (port 1) while a direct-acting, pilot-assisted relief valve controls flow from port 1 to port 2. Pilot assist at port 3 lowers the effective setting of the relief valve at a rate determined by the pilot ratio. Backpressure at port 2 does not affect the valve setting because the spring chamber references the vent (port 4).

TECHNICAL DATA

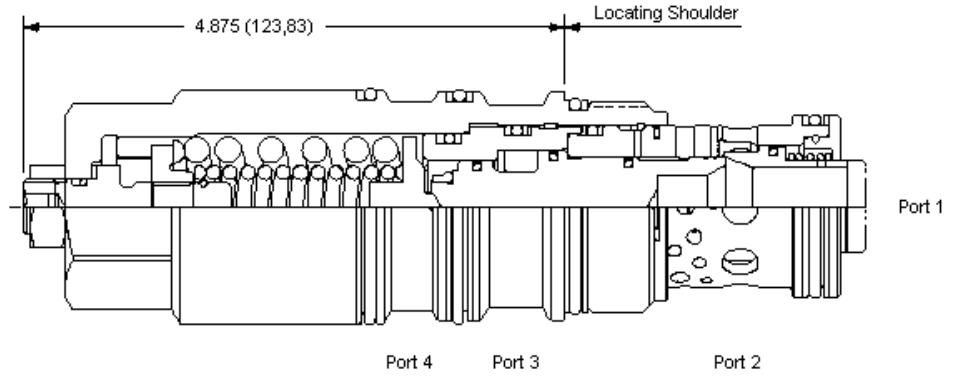
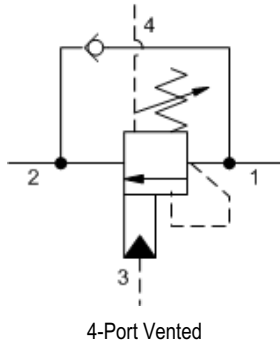
NOTE: DATA MAY VARY BY CONFIGURATION. SEE CONFIGURATION SECTION.

Pilot Ratio	4.5:1
Maximum Recommended Load Pressure	See Technical Features
Factory Pressure Settings Established at	30 cc/min.
Maximum Operating Pressure	350 bar
Maximum Valve Leakage at Reseat	0,3 cc/min.
Check Cracking Pressure	1,7 bar
Adjustment - No. of CCW Turns from Min. to Max. Setting	9
Reseat	≥77% of setting
Seal kit - Cartridge	Buna: 990023007
Seal kit - Cartridge	Polyurethane: 990023002
Seal kit - Cartridge	Viton: 990023006

CONFIGURATION OPTIONS

Model Code Example: MWGGLHN

CONTROL	(L) FUNCTIONAL SETTING RANGE	(H)	SEAL MATERIAL	(N)
L Standard Screw Adjustment	H 1000 - 4000 psi (70 - 280 bar), 3000 psi (210 bar) Standard Setting	N Buna-N	V Viton	
	J 2000 - 5000 psi (140 - 350 bar), 3000 psi (210 bar) Standard Setting			



Vented, load reactive load control valves with pilot assist combine two valves; a check valve and a relief valve. The check valve allows free flow from the directional valve (port 2) to the load (port 1) while a direct-acting, pilot-assisted relief valve controls flow from port 1 to port 2. Pilot assist at port 3 lowers the effective setting of the relief valve at a rate determined by the pilot ratio. Backpressure at port 2 does not affect the valve setting because the spring chamber references the vent (port 4).

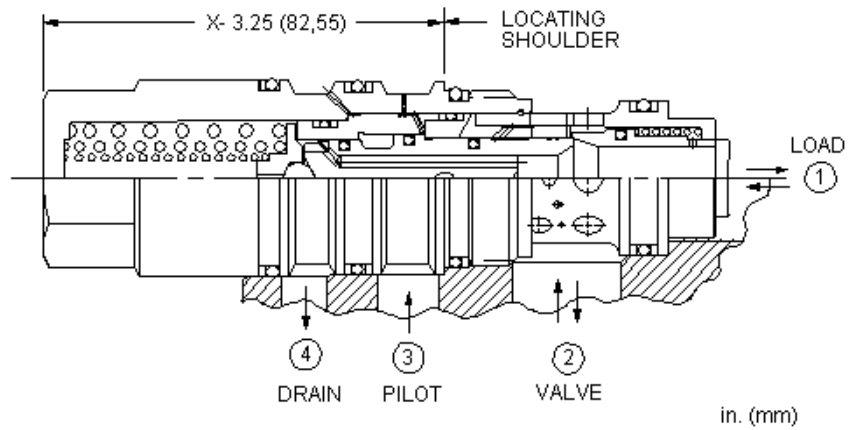
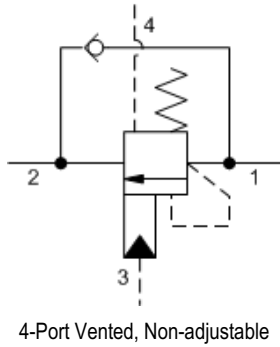
TECHNICAL DATA

NOTE: DATA MAY VARY BY CONFIGURATION. SEE CONFIGURATION SECTION.

Pilot Ratio	4.5:1
Maximum Recommended Load Pressure	See Technical Features
Factory Pressure Settings Established at	30 cc/min.
Maximum Operating Pressure	350 bar
Maximum Valve Leakage at Reseat	0,3 cc/min.
Check Cracking Pressure	1,7 bar
Adjustment - No. of CCW Turns from Min. to Max. Setting	8.5
Reseat	≥77% of setting
Locknut Hex Size	19,1 mm
Locknut Torque	35 - 40 Nm
Seal kit - Cartridge	Buna: 990024007
Seal kit - Cartridge	Polyurethane: 990024002
Seal kit - Cartridge	Viton: 990024006

CONFIGURATION OPTIONS
Model Code Example: MWIGLHN

CONTROL	(L) FUNCTIONAL SETTING RANGE	(H)	SEAL MATERIAL	(N) MATERIAL/COATING
L Standard Screw Adjustment	H 1000 - 4000 psi (70 - 280 bar), 3000 psi (210 bar) Standard Setting		N Buna-N V Viton	Standard Material/Coating /AP Stainless Steel, Passivated /LH Mild Steel, Zinc-Nickel
	J 2000 - 5000 psi (140 - 350 bar), 3000 psi (210 bar) Standard Setting			



Fixed setting, vented, load reactive load control valves with pilot assist combine two valves; a check valve and a relief valve. The check valve allows free flow from the directional valve (port 2) to the load (port 1) while a direct-acting, pilot-assisted relief valve controls flow from port 1 to port 2. Pilot assist at port 3 lowers the effective setting of the relief valve at a rate determined by the pilot ratio. Backpressure at port 2 does not affect the valve setting because the spring chamber references the vent (port 4).

TECHNICAL DATA

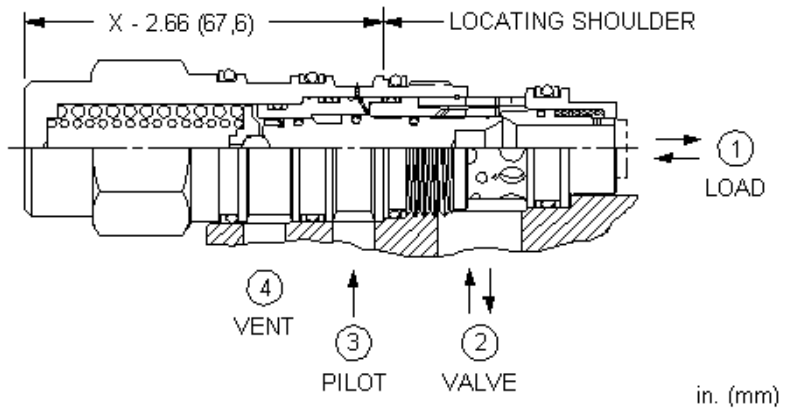
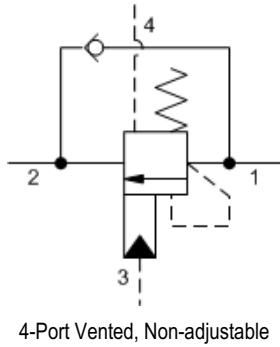
NOTE: DATA MAY VARY BY CONFIGURATION. SEE CONFIGURATION SECTION.

Pilot Ratio	3:1
Maximum Recommended Load Pressure	See Technical Features
Factory Pressure Settings Established at	30 cc/min.
Maximum Operating Pressure	350 bar
Maximum Valve Leakage at Reseat	0,3 cc/min.
Check Cracking Pressure	1,7 bar
Reseat	≥77% of setting
Seal kit - Cartridge	Buna: 990023007
Seal kit - Cartridge	Polyurethane: 990023002
Seal kit - Cartridge	Viton: 990023006

CONFIGURATION OPTIONS

Model Code Example: MWGAXMN

FACTORY SET	(M)	SEAL MATERIAL	(N)
M 5000 psi (350 bar)		N Buna-N	
K 3000 psi (210 bar)		V Viton	
L 4000 psi (280 bar)			



Fixed setting, vented, load reactive load control valves with pilot assist combine two valves; a check valve and a relief valve. The check valve allows free flow from the directional valve (port 2) to the load (port 1) while a direct-acting, pilot-assisted relief valve controls flow from port 1 to port 2. Pilot assist at port 3 lowers the effective setting of the relief valve at a rate determined by the pilot ratio. Backpressure at port 2 does not affect the valve setting because the spring chamber references the vent (port 4).

TECHNICAL DATA

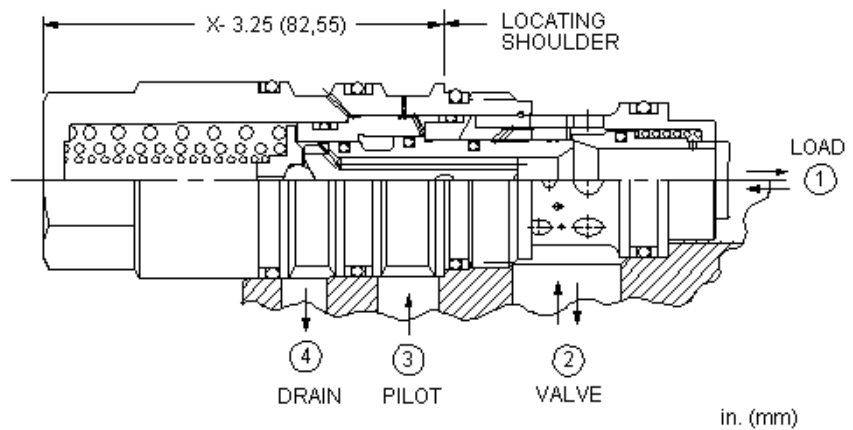
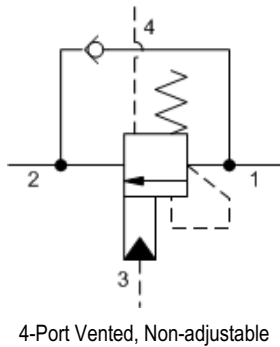
NOTE: DATA MAY VARY BY CONFIGURATION. SEE CONFIGURATION SECTION.

Pilot Ratio	4.5:1
Maximum Recommended Load Pressure	See Technical Features
Factory Pressure Settings Established at	30 cc/min.
Maximum Operating Pressure	350 bar
Maximum Valve Leakage at Reseat	0,3 cc/min.
Check Cracking Pressure	1,7 bar
Reseat	≥77% of setting
Seal kit - Cartridge	Buna: 990022007
Seal kit - Cartridge	Polyurethane: 990022002
Seal kit - Cartridge	Viton: 990022006

CONFIGURATION OPTIONS

Model Code Example: MWEXLN

FACTORY SET	(L)	SEAL MATERIAL	(N)
L 4000 psi (280 bar)		N Buna-N	
K 3000 psi (210 bar)		V Viton	
M 5000 psi (350 bar)			



Fixed setting, vented, load reactive load control valves with pilot assist combine two valves; a check valve and a relief valve. The check valve allows free flow from the directional valve (port 2) to the load (port 1) while a direct-acting, pilot-assisted relief valve controls flow from port 1 to port 2. Pilot assist at port 3 lowers the effective setting of the relief valve at a rate determined by the pilot ratio. Backpressure at port 2 does not affect the valve setting because the spring chamber references the vent (port 4).

TECHNICAL DATA

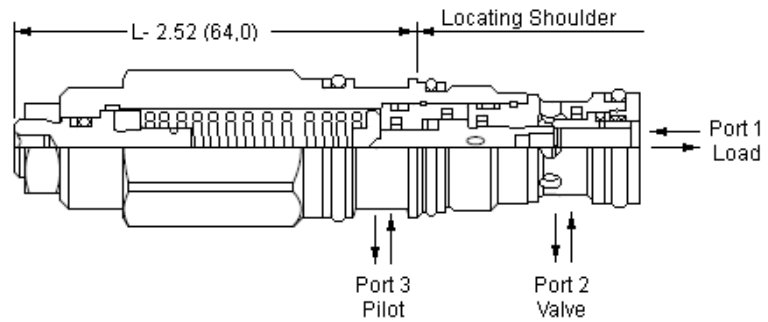
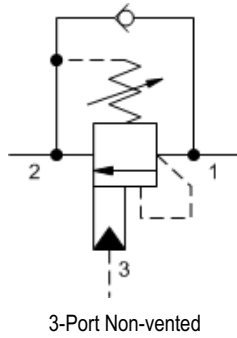
NOTE: DATA MAY VARY BY CONFIGURATION. SEE CONFIGURATION SECTION.

Pilot Ratio	4.5:1
Maximum Recommended Load Pressure	See Technical Features
Factory Pressure Settings Established at	30 cc/min.
Maximum Operating Pressure	350 bar
Maximum Valve Leakage at Reseat	0,3 cc/min.
Check Cracking Pressure	1,7 bar
Reseat	≥77% of setting
Seal kit - Cartridge	Buna: 990023007
Seal kit - Cartridge	Polyurethane: 990023002
Seal kit - Cartridge	Viton: 990023006

CONFIGURATION OPTIONS

Model Code Example: MWGGXLN

FACTORY SET	(L)	SEAL MATERIAL	(N)
L 4000 psi (280 bar)		N Buna-N	
K 3000 psi (210 bar)		V Viton	
M 5000 psi (350 bar)			



Load reactive, load control valves with pilot assist combine two valves; a check valve and a relief valve. The check valve allows free flow from the directional valve (port 2) to the load (port 1) while a direct-acting, pilot-assisted relief valve controls flow from port 1 to port 2. Pilot assist at port 3 lowers the effective setting of the relief valve at a rate determined by the pilot ratio.

TECHNICAL DATA

NOTE: DATA MAY VARY BY CONFIGURATION. SEE CONFIGURATION SECTION.

Pilot Ratio	3:1
Maximum Recommended Load Pressure	See Technical Features
Factory Pressure Settings Established at	30 cc/min.
Maximum Operating Pressure	350 bar
Maximum Valve Leakage at Reseat	0,3 cc/min.
Check Cracking Pressure	1,7 bar
Adjustment - No. of CCW Turns from Min. to Max. Setting	6.5
Reseat	≥77% of setting
Locknut Hex Size	15 mm
Locknut Torque	9 - 10 Nm
Seal kit - Cartridge	Buna: 990011007
Seal kit - Cartridge	Polyurethane: 990011002
Seal kit - Cartridge	Viton: 990011006

CONFIGURATION OPTIONS

Model Code Example: MBDALHN

CONTROL	(L) FUNCTIONAL SETTING RANGE	(H)	SEAL MATERIAL	(N) MATERIAL/COATING
L Standard Screw Adjustment	H 1000 - 4000 psi (70 - 280 bar), 3000 psi (210 bar) Standard Setting		N Buna-N	Standard Material/Coating
C Tamper Resistant - Factory Set	J 2000 - 5000 psi (140 - 350 bar), 3000 psi (210 bar) Standard Setting		V Viton	/AP Stainless Steel, Passivated

smart SOLUTIONS for DEMANDING applications



www.sunhydraulics.com

Sun Hydraulics Headquarters
Sarasota, Florida USA
+1 941 362 1200

Sun Hydraulics Limited
Coventry England
+44 2476 217 400
sales@sunuk.com

Sun Hydraulik GmbH
Erkelenz Germany
+49 2431 80910
sales@sunhydraulik.de

Sun Hydraulics Corp. (India)
Bangalore India
+91 8028 456325
sunindiainfo@sunhydraulics.com

Sun Hydraulics Korea Corp.
Incheon Korea
+82 3281 31350
sales@sunhydraulics.co.kr

Sun Hydraulics China Co. Ltd.
Shanghai P.R. China
+86 2162 375885
sunchinainfo@sunhydraulics.com

Sun Hydraulics Corp. (S.America)
Rosario, Argentina
+54 9 341 584 3075
ventas@sunhydraulics.com